

**CERTIFIED LAND CORNER RECORDATION**

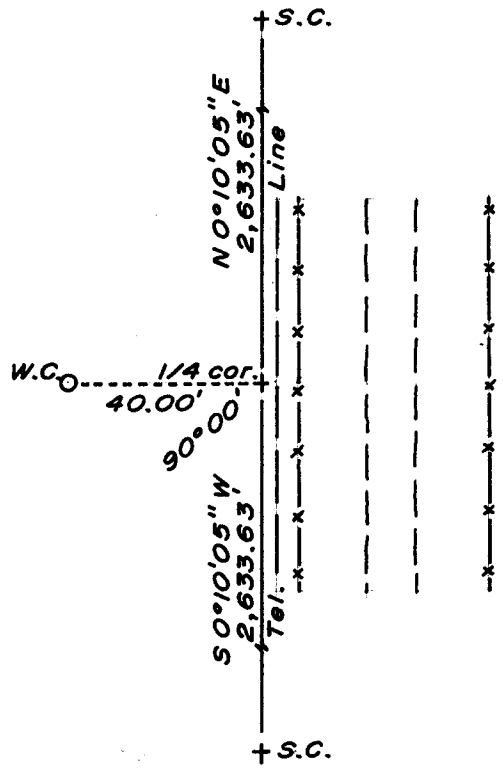
<b>LOCATION</b>	<b>DESCRIPTION OF CORNER EVIDENCE FOUND, AND ORIGINAL RECORD (If known)</b>
$\frac{1}{4}$ S.26 S.25 T.15N., R.67W. 6th P.M.	No evidence found.  Corner re-established by single proportionate measurement as shown. G.L.O. record - Granite Boulder 15 x 8 x 5; John B. Thomas, 1870.

**DESCRIPTION OF MONUMENT AND ACCESSORIES ESTABLISHED TO PERPETUATE THE ORIGINAL LOCATION OF THIS CORNER:**

**At the corner:** No monument set.

**Accessories:** A 1½" dia. x 30" long (concrete-filled) iron pipe with brass cap, stamped as a witness corner, bears N 89°49'55" W, 40.00 feet distant. (Not set on the east-west center line of Section 26)

**SKETCH, WITH COURSE AND DISTANCE TO ADJACENT CORNER IF DETERMINED IN THIS SURVEY.**  
(May Sketch or Paste Reproduction on Reverse Side.)



Brass cap set 4" above ground.  
Brass cap stamped:  
T.15N. R.67W.  
 $\frac{1}{4}$  W.C. →  
S.26 S.25  
LS 519 1974

I, R.L. Hudson certify that I have carefully performed ~~or reviewed~~ the work done on the diagrammed corner as reported on this recordation form and approve the same.

R.L. Hudson Wyoming L.S. No. 519  
Signature of Surveyor Registration No.

STATE OF WYOMING,  
Office of Clerk and Recorder,  
County of Sarawie

This "corner record" was filed for record on the 24 day of June, 1974, was noted on the cross-index plat and is assigned page No. \_\_\_\_\_, in book No. \_\_\_\_\_.

John B. Swaman  
County Official

Cross Index No. <u>T21</u>	T. <u>15</u>	R. <u>67</u>	<u>6</u> Mer.
_____	T. _____	R. _____	Mer.
_____	T. _____	R. _____	Mer.
_____	T. _____	R. _____	Mer.
_____	T. _____	R. _____	Mer.
_____	T. _____	R. _____	Mer.
_____	T. _____	R. _____	Mer.

Photographed

Indexed

Recorded

Assessor

The State of Wyoming }  
County of Laramie } ss

This instrument was filed for record  
at 10:57 o'clock A M. on the  
24 day of June  
A. D. 19 24 and duly recorded in  
Book \_\_\_\_\_ on page \_\_\_\_\_

*John B. Williams*

County Clerk & Ex-Officio Register of Deeds  
by JB Deputy